

German Technology



FF MED PROASSIST

Mobile Functional Furniture for the Operating Theatre and Outpatient Departments
by FF Co. Ltd.

Former serial product of BLANCO Professional

An unbeatable team

MEGAprogress, MEGAdrive, PROassist, MEGAstore, CLEANassist

The FF MED brand provides system solutions for medical functional areas in clinics and hospitals, as well as outpatient departments and medical practices.

MEGAprogress is full of rich features. Perfectly-fitted furnishings are planned for every imaginable functional area, for example sterilisation areas. Instrument and implant storage cabinets, endoscope and catheter storage cabinets – MEGAprogress provides a solution to all technical requirements in hospitals and medical practices.

Awards: Reddot Design Award 2012

The "little brother" **MEGAdrive** is the mobile addition to the MEGAprogress cabinet range. Everything that needs to be brought to patients quickly can be loaded into, hung onto or clicked into it.

Awards: Reddot Design Award 2011

Our mobile functional furniture **FF MED PROassist** provides safety and high quality in every respect. The range contains a wealth of clever, mobile assistants for all the functional areas of a clinic. There is a focus on flexibility and hygiene in all of the products, whether they are furniture, seating or equipment. All of the furniture is made of stainless steel and thus corrosion-resistant, resistant to disinfectants, hygienic and easy to care for.

The **MEGAstore** offers ample space for an entire day's worth of consumables. Individually usable modules can be used to store everything needed in the day-to-day running of a clinic. Dust-tight and clean behind space-saving roller shutters or individually opening hinged doors. Stylish and modern in shape and colour, smart in its versatility as a valuable assistant – this is why the MEGAstore was distinguished with the Red Dot Award 2014.

Our sterile supply and disposal components have proven themselves in countless central sterilization departments.

With our expanded **CLEANassist** product line, we are presenting an integrated system solution that implements innovative ideas in order to optimally organize the sterile supply and disposal cycle.

As a system supplier in the medical technology field, we offer not only comprehensive product know-how but also competence in the organisation of logistical processes in the hospital. We respond individually to your needs to create a suitable solution for any requirements.

Our systems are designed to be modular and flexible. They can be easily customised and supplemented.

Everything from a single source.

FF MED - Your medical technology system supplier.



Please Feel Free to download our Catalogues from our website (<http://ffzrt.hu>), or you can use this QR code to go directly to the site.



ORGANISATION WITH A SYSTEM

Our mobile functional furniture PROassist provides safety and high quality in every respect. The range contains a wealth of clever, mobile assistants for all the functional areas of a clinic.

There is a focus on flexibility and hygiene in all of the products, whether they are furniture, seating or equipment. All of the furniture is made of stainless steel and thus corrosion-resistant, resistant to disinfectants, hygienic and easy to care for – throughout its entire service life.

Advantages at a glance

- Manoeuvrable synthetic antistatic double castors ensure optimum mobility.
- The five-footbase provides a high level of stability.
- All PROassist products have a ground surface which is very refined and hygienic.
- Available in numerous equipment variants.
- High level of stability.
- Welded without joints to eliminate corners and edges.
- The electrically conductive design of all relevant parts prevents static charging.
- Reliable service from the manufacturer.

Contents

Never stop improving	4
Furniture for the operating theatre and outpatient department	5
Operating theatre swivel stool and rolling swivel chair	11
Supply and disposal	13
Instrument and equipment trolleys, accessories	24
Transport and multi-purpose trolleys	29

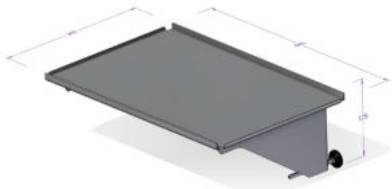


NEVER STOP IMPROVING

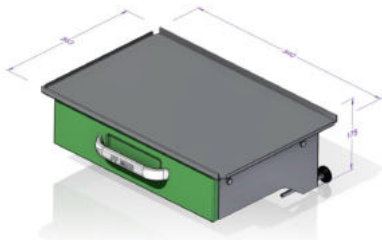
Our new solutions at your service.

SHARE
WITH US
YOUR SPECIAL
REQUEST

FF Mate shelf:



2 mounting methods:
wall-mounted or rail system;
without drawer,
with 1 or 2 drawers.



Warming cabinet:

Our former product with new features: digitally controlled heating, adjustable in 0,1 degree, up to max. 65 degrees, clearly visible digital display, insulated side and back wall. Not suitable for storing infusions!

Gascylinder transportation trolley:

A good example, how we accomplish a special partner request in a short time frame. This allows the new product to reach the market on time, with a perfect match in specifications.



Infusion Max:

Heavy duty mobile stand especially for holding infusion pumps.
See page 9. for further information.



Trolley for medical ventilator:

Designed especially for moving and storing respiratory ventilator.

! For custom sizes, please consult with your local Partner

A HANDLE ON SAFETY

There are two criteria for products in the most sensitive medical area, the Operating Theatre. They require absolutely hygienic materials and maximum functionality. Every movement must be perfect, and each unit must be within reach!

The FF MED PROassist range is specifically designed to support the work of operating theatre personnel.



Bowl stand with heating (incl. touch protection)

The heatable FF bowl stand heats rinsing solutions and is primarily used in the operating theatre. The unit corresponds to Class 1 of the Medical Devices Act and has the CE mark.

Bowl: reinforced bottom, non-slip positioning ring and push handle, all made of stainless steel. Capacity 5.5 litres.

Heating: round tubular heating element cast in aluminium plate; connected load 230 V, 50/60 Hz, 600 W; continuously adjustable from 30–60 °C, with lock catch at 40 °C; easily legible switching lever; temperature setting in 10 °C increments; integrated temperature limiter in stainless steel housing;

operating mode indicator with LED; control accuracy +/- 3 °C; ready to plug in with 5 m connection cable; Schuko plug.

Frame: mobile, 5-foot design with tip safety made of stainless steel; welded without joints; Height 1004-1275 mm, can be adjusted with one hand, abrasion-resistant synthetic double castors, 3 of which are electrically conductive (5 steering castors dia. 75 mm, 2 castors with brake).

Dimensions: 630 x 630 x 1004/1275 mm
Weight: 14 kg

Order No. 542 162

FURNITURE FOR THE OT AND OUTPATIENT DEPARTMENT

Bowl stands

The bowl stands securely hold solutions, liquids, cloths, etc.

Mobile 5-foot design made of stainless steel and welded without joints. With push handle and removable stainless steel bowl. Abrasion-resistant, non-discolouring, corrosion-resistant, synthetic antistatic double castors (5 steering castors, diameter 75 mm, 2 of which have brakes); Bowl: capacity 6 litres, outside diameter 320 mm.



Bowl stand, single

Dimensions: 635 x 670 x 865 mm

Weight: 4 kg

Order No. 542 164

Bowl stand, double

Dimensions: 635 x 700 x 865 mm

Weight: 7 kg

Order No. 542 165

Hand and arm surgical table

This surgical table is designed for surgery to the hand or arm. Manually height-adjustable, with radiolucent table top.

Mobile 4-foot design made of stainless steel and welded without joints. Table top with radiolucent upholstery, height 30 mm, can be removed or tilted to all sides with ball joint; can be tightly fixed in place with clamping lever.



Manually height-adjustable from 650–950 mm. Antistatic upholstery. Loading capacity: 15 kg. Abrasion-resistant, non-discolouring, corrosion-resistant synthetic double castors, 2 of which are electrically conductive (4 steering castors dia. 75 mm).

Dimensions: 450 x 450 x 760/1030 mm

Weight: 7 kg

Order No. 542 169

Mayo instrument table

All surgical instruments are well-organised and within reach on the mobile and height-adjustable mayo instrument table.

Mobile 4-foot design made of stainless steel and welded without joints. Sturdy, seamless deep-drawn table top made of stainless steel, with rounded corners and edges. Manually height-adjustable from 830-1300 mm. Max. surface

load: 30 kg Abrasion-resistant, non-discolouring, corrosion-resistant synthetic double castors, 2 of which are electrically conductive (4 steering castors dia. 75 mm).

Dimensions of table top: 640 x 440 mm

Dimensions: 640 x 440 x 830/1300 mm

Weight: 22 kg

Order No. 542 182





Hydraulic pump mayo instrument table

The practical mayo instrument table, easily height-adjustable using a foot pedal.

Heavy 3-foot design with tip safety and installed precision pump (closed hydraulic system, max. load 30 kg, maintenance-free, immediately ready for operation) for height adjustment from 950–1350 mm with foot pedal operation, frame construction and lifting column made of stainless steel. Step bar provided with electrically-conductive rubber protection. Sturdy, seamless deep-drawn table top made of stainless steel, with rounded corners and edges, can be rotated and locked. Abrasion-resistant, non-discolouring, corrosion-resistant synthetic double castors, 1 is electrically conductive (3 steering castors dia. 75 mm)

Dimensions of table top: 640 x 440 mm
Dimensions: 730 x 540 x 950/1350 mm
Weight: 30 kg

Order No. 543 270

Dimensions of table top: 740 x 540 mm
Dimensions: 780 x 540 x 950/1350 mm
Weight: 31 kg

Order No. 543 271

Lower version:

Dimensions of table top:
740 x 540 mm
Dimensions: 740 x 540 x 650/850 mm
Weight: 28 kg

Order No. 543 271 01

For more information, custom size please consult your local authorized Partner.



Hydraulic pump mayo instrument table, Model Tübingen

All of the instruments can really be accommodated on this extremely large table top.

Made of stainless steel, with installed precision pump (closed hydraulic system, max. load 30 kg, maintenance-free, immediately ready for operation) for height adjustment from 950–1350 mm. Especially large table top, can be rotated by 360° and locked. Abrasion-resistant, corrosion-resistant double ball bearing castors (4 steering castors, dia. 125 mm, 2 of which have brakes), electrically conductive.

Dimensions: 1200 x 600 x 950/1350 mm
Weight: 43 kg

Order No. 543 269

For more information, custom size please consult your local authorized Partner.

FURNITURE FOR THE OT AND OUTPATIENT DEPARTMENT



Bucket stand

For discarding consumables quickly in the operating theatre.

Mobile, made of stainless steel, jointless, with all-round electrically-conductive bumper ring, support for stainless steel bucket. With stainless steel bucket, approx. 15 litre volume.

With 4 synthetic double castors, 2 of which are electrically-conductive (dia. 50 mm).

Bucket stand without push handle

Dimensions of bucket stand:

466 x 466 x 263 mm

Weight: 6 kg,

Dimension of upper edge of the bucket: 465 mm

Order No. 542 178

Bucket stand with push handle

Model as described, except with push handle.

Dimensions: 466 x 575 x 800 mm

Weight 7 kg

Order No. 542 180



Laundry and waste trolley

The transport trolley for worn surgical clothing or for waste of any type.

Mobile, jointless tubular frame design made of stainless steel, with hanging fixture which hold commercially-available laundry or waste sacks with 60/70 l volume, with moulded push handle.

Special support frame prevents the laundry or waste sack from slipping through. With 4 synthetic double castors, 2 of which are electrically-conductive (dia. 75 mm), 2 castors with brake.

Transport trolley, single (for 1 laundry or waste sack)

Dimensions: 575 x 350 x 777 mm

Weight: 7 kg

Order No. 542 163

Transport trolley, double (for 2 laundry or waste sacks)

Dimensions: 1020 x 350 x 777 mm

Weight: 10 kg

Order No. 542 166

Accessories:

Synthetic lid for waste trolley

Synthetic, for retrofitting on FF transport trolley for laundry and waste sacks.

Dimensions: 403 x 360 mm

Order No. 543 521

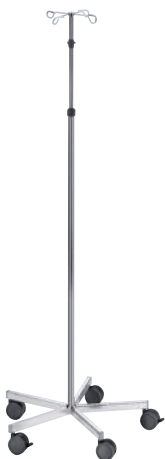
NEW!

Heavy duty mobile stand especially for holding infusion pumps

Made of electropolished stainless steel material; easy-to-move, ergonomic and robust. Adjustable infusion bottle holder arms with hooks, easy to set the required position. High quality smooth-rolling castors, electrically conductive, rugged brakes on two of the castors, diameter: 125 mm.

Dimensions: 510 x 1804 x 632 mm
Size of the infusion pump holder: 768 mm
Weight: 16,4 kg

Order No. 542 174



Infusion stand

Practical one-hand model

Made of stainless steel, 5-foot design welded without joints. Height-adjustable from 1520–2200 mm using one-hand height adjustment, with aqua gland with synthetic sealing ring and control ring; including stainless steel bottle holder with 4 safety infusion hooks. With drip vessel and holder; loading capacity per hook: 2 kg. Non-discolouring, corrosion-resistant synthetic antistatic double castors (5 steering castors, dia. 75 mm, 2 of which have brakes).

Dimensions: 630 x 630 x 1520/2200 mm
Weight: 10 kg

Order No. 542 171

FURNITURE FOR THE OT AND OUTPATIENT DEPARTMENT



Operating theatre shoe racks

What to do with the operating theatre shoes?

Straight into the rack for the pre-operative and post-operative area.

Operating theatre shoe rack, mobile

Mobile 4-foot design made of stainless steel, welded without joints, with 6 stainless steel tube frame levels as a support for 24 pairs of operating theatre shoes of all sizes. Abrasion-resistant, non-discolouring, corrosion-resistant synthetic antistatic double castors (4 steering castors, dia. 75 mm, 2 of which have brakes).

Dimensions: 970 x 580 x 1600 mm

Weight: 26 kg

Order No. 542 187

Operating theatre shoe rack, wall-mounted

Stainless steel frame construction, welded without joints, with 7 stainless steel tube frame levels as a support for 30 pairs of operating theatre shoes of all sizes.

Dimensions: 894 x 345 x 1450 mm

Weight: 24 kg

Order No. 542 188



Operating theatre step stool

The operating theatre step stool from FF Co. Ltd. has particularly durable feet!

Stable 4-foot design made of stainless steel and welded without joints. Model and dimensions are in compliance with professional association guidelines. For easier cleaning with removable, non-slip, corrugated step surface made of stainless steel; 4 electrically conductive, non discolouring or non marking rubber feet. Load capacity: 125 kg

Operating theatre step stool, single, 130 mm high

Load capacity: 125 kg

Dimensions: 600 x 350 x 130 mm

Weight: 4 kg

Order No. 542 191

Operating theatre step stool, single, 220 mm high

Load capacity: 125 kg

Dimensions: 600 x 350 x 220 mm

Weight: 5 kg

Order No. 542 192

Operating theatre step stool, single, 300 mm high

Load capacity: 125 kg

Dimensions: 600 x 350 x 300 mm

Weight: 6 kg

Order No. 542 193

Operating theatre step stool, double, 220/440 mm high

Load capacity: 100 kg

Dimensions: 600 x 650 x 220/440 mm

Weight: 9 kg

Order No. 542 194

OPERATING THEATRE SWIVEL STOOL AND ROLLING SWIVEL CHAIR

There are demanding requirements on seating for use in the operating theatre. For example, the safe electrical discharge of all the parts in the surgical area is essential for patient safety.

The seating should also be ergonomic, rugged, hygienic and easy to clean. Ideally, it should also be height-adjustable. Operating theatre swivel stools and rolling swivel chairs from FF reliably fulfil all of these requirements.



Operating theatre rolling swivel chair

Mobile 5-castor design made of stainless steel. Continuous height adjustment from 510–740 mm with installed gas pressure spring using foot operation with large, chromed safety foot bar; black electrically conductive upholstery with extension security lock according to DIN standards. Seat dia. 360 mm for round seat, 420 mm for saddle seat, upholstery thickness 100 mm for round seat, 80 mm for saddle seat, footprint dia. 480 mm, 140 kg loading capacity. Abrasion-resistant, non-discolouring, corrosion-resistant synthetic castors (5 steering castors, dia. 50 mm with double ball bearing, 3 of which are electrically conductive, foot brake integrated in the transport frame).

Rolling swivel chair with round seat

Dimensions: 480 x 600 mm

Weight: 25 kg

Order No. 344 351

Rolling swivel chair with round seat and backrest

Backrest adjustable by 45 mm

Dimensions: 480 x 900 mm

Weight: 25 kg

Order No. 344 352

Rolling swivel chair with saddle seat

Dimensions: 480 x 600 mm

Weight: 30 kg

Order No. 344 353

Rolling swivel chair with saddle seat and backrest

Backrest adjustable by 45 mm

Dimensions: 480 x 900 mm

Weight: 30 kg

Order No. 344 354

OPERATING THEATRE SWIVEL STOOL AND ROLLING SWIVEL CHAIR



Swivel stools

You can use these swivel stools in all functional rooms and the operating theatre because they are electrically conductive.

Stainless steel design with precision-spindle height adjustment, glass-bead blasted. Upholstered seats (dia. 340 mm) with electrically-conductive black cover. 140 kg load capacity.

Stationary models with electrically conductive-rubber feet. Mobile models with 5 steering castors, dia. 50 mm (abrasion-resistant, non-discolouring, corrosion-resistant synthetic double castors, 3 of which are electrically conductive).

Swivel stool with seat and spindle made of stainless steel, glass-bead blasted

Dimensions: 460 x 400/620 mm

Weight: 9 kg

Order No. 344 355

Swivel stool with seat and spindle made of stainless steel, glass-bead blasted

Model as described, except 5-foot cross with castors.

Dimensions: 460 x 440/660 mm

Weight: 9 kg

Order No. 344 356

Swivel stool with flat upholstered seat

(35 mm high)

Stationary model with electrically conductive-rubber feet.

Dimensions: 460 x 435/635 mm

Weight: 9 kg

Order No. 344 357

Swivel stool with flat upholstered seat

(35 mm high)

Mobile model with 5 steering castors, dia. 50 mm

Dimensions: 460 x 475/695 mm

Weight: 9 kg

Order No. 344 358

Swivel stool with high upholstered seat

(65 mm high)

Model as described, except stationary.

Dimensions: 460 x 465/685 mm

Weight: 9 kg

Order No. 344 359

Swivel stool with high upholstered seat

(65 mm high)

Model as described, except with castors.

Dimensions: 460 x 505/725 mm

Weight: 9 kg

Order No. 344 360

ESSENTIAL ASSISTANTS



Our units for the operating theatre and outpatient department provide complete solutions in a modular design, which means that you can put your trolley together according to your requirements. In this way you achieve an effective system where everything is where it belongs.

We exclusively use stainless steel for all the products for the medical field. It is the most hygienic material and can even be sterilised. In addition, stainless steel continues to shine, even after years of care with cleansers and disinfectants.



SUPPLY AND DISPOSAL



Hook trolley/wall-mounted hook rail

In the comprehensive system of hook trolleys and accessories from FF Co. Ltd., the design is modular, and all the parts are compatible. Put your trolley together according to your requirements, including accessories for every imaginable task.

Hook trolley, one side

Mobile jointless square tube frame construction, 25 x 25 mm, made of stainless steel, with hooks which have a maximum capacity of three 1 STE baskets or comparable articles. Vertical hook loading capacity 60 kg per hook;

abrasion-resistant, non-discolouring, corrosion-resistant synthetic antistatic double castors (4 steering castors, dia. 75 mm, 2 of which have brakes, with wall guards). Dimensions: 600 x 460 x 1438 mm
Weight: 7 kg

Order No. 542 208

Hook trolley, both sides

Model as described, except with hooks which hold a maximum of six 1 STE baskets.

Dimensions: 600 x 670 x 1438 mm

Weight: 7 kg

Order No. 542 209



Wall-mounted hook rail with hook

Made of stainless steel, produced from rectangular tubing 30 x 20 mm, with 2 synthetic caps, welded-on hooks, hook spacing 350 mm, vertical hook loading capacity 60 kg per hook, holds STE baskets or comparable articles.

Wall-mounted hook rail, 1 pc., with 2 hooks

Dimensions: 700 mm long

Weight: 1 kg

Order No. 542 210

Wall-mounted hook rail, 1 pc., rail with with 3 hooks

Dimensions: 1050 mm long

Weight: 1.4 kg

Order No. 542 211

Wall-mounted hook rail, 1 pc., rail with 4 hooks

Dimensions: 1400 mm long

Weight: 1.6 kg

Order No. 542 212

Wall-mounted hook rail, 1 pc., rail with with 5 hooks

Dimensions: 1750 mm long

Weight: 2.2 kg

Order No. 542 213

Wall-mounted hook rail, 1 pc., rail with with 7 hooks

Model as described, except hook spacing 240 mm for accepting 7 sterile equipment baskets 1/2 STE

Dimensions: 1600 mm long

Weight: 2.5 kg

Order No. 542 214



Sterile equipment basket

Ideal for transport, storage and sterilisation.

Made of stainless steel, electrolytically polished, burr-free finish, closed wire loops (2.5 mm), welded in the middle under the upper frame (6 mm), base frame (5 mm) designed as stacking frame (3 mm).

Mesh size: Wall 22 x 40 mm, base 22 x 22 mm; can be suspended in wall-mounted hook rails and hook trolleys, loading capacity: 20 kg.

Sterile equipment basket 1/2 STE

Dimensions: 575 x 280 x 135 mm

Weight: 2 kg

Order No. 542 215

Sterile equipment basket 1 STE

Model as described

Dimensions: 575 x 280 x 265 mm

Weight: 2 kg

Order No. 542 216

Sterile equipment basket 1 STE with handle opening

Made of stainless steel, with handle opening on the long side 300 x 120 mm.

Model as described

Dimensions: 575 x 280 x 265 mm

Weight: 2 kg

Order No. 542 217

Sterile equipment basket 2 STE

Model as described, except loading capacity: 30 kg

Dimensions: 575 x 560 x 265 mm

Weight: 2 kg

Order No. 542 218



Universal holder for synthetic and wire containers

Made of stainless steel, clean, jointless finish.

Holds 3 containers, size 3.

Dimensions: 550 x 37 x 247 mm

Weight: 1 kg

Order No. 542 219

Holds 4 containers, size 4.

Dimensions: 550 x 37 x 170 mm

Weight: 1 kg

Order No. 542 220

Holds 5 containers, size 5.

Dimensions: 550 x 37 x 124 mm

Weight: 1 kg

Order No. 542 221

SUPPLY AND DISPOSAL



Multi-purpose tray

Holds folded paper, made of stainless steel, clean, jointless finish.

Dimensions: 610 x 326 x 260 mm

Weight: 1.5 kg

Order No. 542 222



Shoe rack

Made of stainless steel, clean, burr-free finish, electrolytically polished, with 12 hanging bars, closed wire loops, wire thickness: 6 mm, holds a maximum of 6 pairs of shoes.

Dimensions: 600 x 263 x 180 mm

Weight: 1 kg

Order No. 542 223



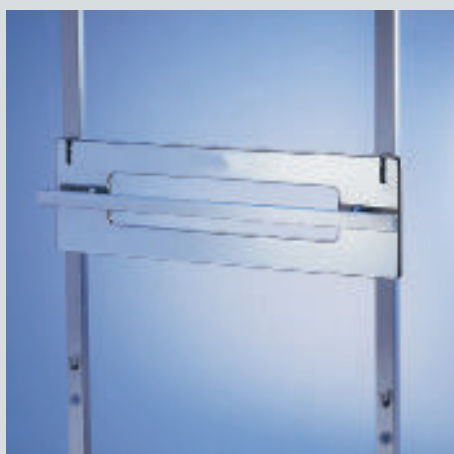
Hose and abdominal cloth rack

Made of stainless steel, clean, jointless finish, with 11 welded-in hooks, arranged offset, holds anaesthesia hoses and abdominal cloths.

Dimensions: 585 x 94 x 180 mm

Weight: 1.5 kg

Order No. 542 224



Multi-purpose equipment holder

For example for anaesthesia units, operating theatre accessories. Made of stainless steel, clean, jointless finish, slide rail produced of solid material 25 x 10 mm.

Dimensions: 600 x 48 x 180 mm

Weight: 1.5 kg

Order No. 542 225

NEW!



Hook trolley with splash guard

Hook trolleys are available with closed back wall called 'splash guard', in order to protect the objects from different splashes and from other contaminants. The splash guard can be ordered separately.

Dimensions: 600 x 460 x 1438 mm

Weight: 11,5 kg

Order No. 542 207

SUPPLY AND DISPOSAL



Stainless steel housing for Plexiglas chutes

With 3 Plexiglas chutes,
stackable.

Dimensions: 601 x 172 x 245 mm

Weight: 5 kg

Order No. 542 226

With 5 Plexiglas chutes,
stackable.

Dimensions: 601 x 172 x 171 mm

Weight: 4.5 kg

Order No. 542 227



Holder for stainless steel special container

Made of stainless steel, clean, jointless finishing, which holds special containers, with storage bar for lids.

Dimensions: 550 x 325 x 320 mm

Weight: 2 kg

Order No. 542 228

Stainless steel special container (without lid), 200 mm deep

Made of stainless steel, seamless deep-drawn, for FF wire mesh basket.

Dimensions: 530 x 325 x 200 mm

Weight: 2.1 kg

Order No. 1550592

Stainless steel special container (without lid), 100 mm deep

Made of stainless steel, seamless deep-drawn, for FF wire mesh basket.

Dimensions: 530 x 325 x 100 mm

Weight: 1.4 kg

Order No. 1550590

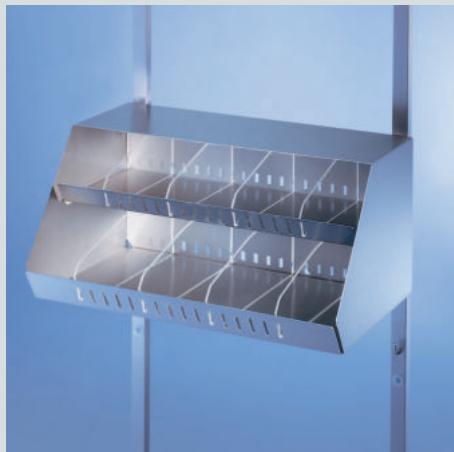
Lid

For stainless steel special container.

Dimensions: 530 x 325 mm

Weight: 1.1 kg

Order No. 550 658



Syringe and cannula tray

Made of stainless steel, clean, jointless finish, middle shelf. Equipped with 4 Plexiglas subdivisions each, which can be adjusted variably.

Dimensions: 580 x 350 x 275 mm
Weight: 9 kg

Order No. 542 229



Suture material tray

Made of stainless steel, with 4 shelves, holds a maximum of 20 commercially available small packages.

Dimensions: 600 x 173 x 290 mm
Weight: 6 kg

Order No. 542 230



Glove dispenser

Made of stainless steel, holds a maximum of 50 pairs each of 3 glove sizes.

Dimensions: 580 x 320 x 260 mm
Weight: 9 kg

Order No. 542 231

SUPPLY AND DISPOSAL



Writing surface

Made of stainless steel. As writing support for the nursing staff. Writing surface with front bevel and middle shelf

Dimensions: 580 x 396 x 244 mm

Weight: 6 kg

Order No. 542 232



Storage for urinal bottles

Made of stainless steel, clean, jointless finishing, holds 5 urinal bottles.

Dimensions: 580 x 276 x 230 mm

Weight: 4 kg

Order No. 542 233

Storage for 5 bedpans with lids

Made of stainless steel, holds 5 bedpans and 5 lids.

Dimensions: 675 x 420 x 230 mm

Weight: 6 kg

Order No. 542 234



Support surface with bracket

With permanently-welded bracket made of stainless steel, clean, jointless finish. Carrying capacity for evenly-distributed load: 50 kg.

Dimensions: 695 x 350 x 205 mm

Weight: 5 kg

Order No. 542 235

Dimensions: 695 x 450 x 240 mm

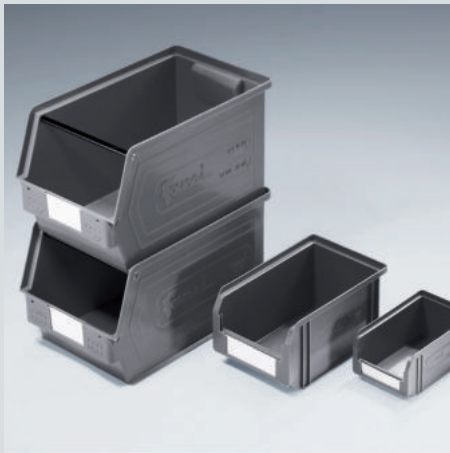
Weight: 6 kg

Order No. 542 236

Dimensions: 695 x 600 x 275 mm

Weight: 8 kg

Order No. 542 237



Synthetic container

Made of polypropylene. Stackable, can be suspended in holders for containers. Holds various goods.

Size 3, blue

Dimensions: 210 x 350 x 200 mm

Order No. 542 238

Size 4, blue

Dimensions: 150 x 230 x 125 mm

Order No. 542 239

Size 5, blue

Dimensions: 100 x 170 x 75 mm

Order No. 542 240

Size 3, green

Dimensions: 210 x 350 x 200 mm

Order No. 542 241

Size 4, green

Dimensions: 150 x 230 x 125 mm

Order No. 542 242

Size 5, green

Dimensions: 100 x 170 x 75 mm

Order No. 542 243

SUPPLY AND DISPOSAL



Wire container

Made of stainless steel, can be suspended in container holders.

Size 3

Dimensions: 350 x 210 x 200 mm

Order No. 542 244

Size 4

Dimensions: 230 x 150 x 125 mm

Order No. 542 245

Size 5

Dimensions: 170 x 100 x 75 mm

Order No. 542 246



Wire mesh basket with folding handle

Made of stainless steel, electrolytically polished, burr-free finish, wire mesh basket deep-drawn, closed base frame with crossbars for high loading capacity, 2 folding handles inside, mounted on the short side.

Handle bar 130 x 40 mm.

Size 1

Dimensions: 240 x 250 x 50 mm

Order No. 542 247

Size 2

Dimensions: 480 x 250 x 50 mm

Order No. 542 248

SUPPLY AND DISPOSAL



Strainer

Stainless steel, electrolytically polished, burr-free finish, welded screen 10 x 10 x 1 mm, closed base frame, recess lengthwise in upper frame serves as carrying bar, stackable, 4 U-shaped feet welded to the base frame. Fits in polypropylene containers.

Dimensions: 245 x 175 x 90 mm

Order No. 542 249

Polypropylene container

Containers made of polypropylene, can be sterilised to +134 °C, holds used instruments, syringes, cannulas and catheters; container holds a strainer.

Polypropylene container with closed lid

Dimensions: 300 x 225 x 125 mm

Order No. 542 250

Polypropylene container with slotted lid

Dimensions: 300 x 225 x 125 mm

Order No. 542 251



Pallet trolley

For convenient transport of one 2 STE basket or two 1 STE baskets.

Mobile, jointless square tube frame construction, 25 x 25 mm, made of stainless steel, holds two 1 STE baskets or one 2 STE basket, with moulded push handle, 4 steering castors dia. 125 mm, 2 of which have brakes, with double ball bearing, electrically conductive, with thread guard and wall guard. Max. load capacity: 100 kg

Dimensions: 675 x 815 x 900 mm

Weight: 11 kg

Order No. 542 252

MOBILE STORAGE – EVERYTHING IS WITHIN REACH!



The side tables, rolling trolleys and unit holders and dispensers are small yet essential passive assistants.

We have developed a sophisticated range of accessories for these assistants. The accessories are user-friendly and add a lot of value.

All FF-MED brand products are meticulously finished and made of hygienic stainless steel whenever possible.



INSTRUMENT AND EQUIPMENT TROLLEYS



Instrument trolley

**Small castors with a big effect.
These instrument trolleys are any-
where you need them.**

Mobile, jointless square tube frame construction, 20 x 20 mm, made of stainless steel. Tube frame designed as a protective railing, top and bottom with removable stainless steel table tops.

Load capacity: 20 kg,

Drawer dimensions: 445 x 95 mm

Abrasion-resistant, non-discolouring, corrosion-resistant synthetic antistatic double castors (4 steering castors, dia. 75 mm, 2 of which have brakes with wall guard).

Instrument trolleys are also available:

- in 900 mm and 1000 mm heights upon request

- with different drawer sizes

For more information, custom size please consult your local authorized Partner.

Instrument trolley

Dimensions: 675 x 475 x 800 mm

Weight: 10 kg

Order No. 542 265

Instrument trolley

Dimensions: 770 x 675 x 800 mm

Weight: 13 kg

Order No. 542 266

Instrument trolley

Dimensions: 990 x 675 x 800 mm

Weight: 15 kg

Order No. 542 267

Instrument trolley with drawer

Dimensions: 675 x 475 x 800 mm

Weight: 14 kg

Order No. 542 268

Instrument trolley with drawer

Dimensions: 770 x 675 x 800 mm

Weight: 18 kg

Order No. 542 269

Instrument trolley with drawer

Dimensions: 990 x 675 x 800 mm

Weight: 21 kg

Order No. 542 270

Instrument trolley with 3-sided stainless steel railing

Dimensions: 675 x 475 x 800 mm

Weight: 12 kg

Order No. 542 271

Instrument trolley with 3-sided stainless steel railing

Dimensions: 770 x 675 x 800 mm

Weight: 17 kg

Order No. 542 272

Instrument trolley with 3-sided stainless steel railing

Dimensions: 990 x 675 x 800 mm

Weight: 20 kg

Order No. 542 273

Instrument trolley with drawer and 3-sided stainless steel railing

Dimensions: 675 x 475 x 800 mm

Weight: 19 kg

Order No. 542 274

Instrument trolley with drawer and 3-sided stainless steel railing

Dimensions: 770 x 675 x 800 mm

Weight: 25 kg

Order No. 542 275

Instrument trolley with drawer and 3-sided stainless steel railing

Dimensions: 990 x 675 x 800 mm

Weight: 29 kg

Order No. 542 276

Instrument trolley with flush retaining lip, removable upper table top

Dimensions: 689 x 489 x 800 mm

Weight: 10 kg

Order No. 542 278

Instrument trolley with flush retaining lip, removable upper table top

Dimensions: 784 x 689 x 800 mm

Weight: 13 kg

Order No. 542 279

Instrument trolley with flush retaining lip, removable upper table top

Dimensions: 1004 x 689 x 800 mm

Weight: 15 kg

Order No. 542 280

INSTRUMENT AND EQUIPMENT TROLLEYS



Equipment trolley

A slightly lower mobile table to accommodate heavier and larger equipment while maintaining an optimal working height.

Mobile, jointless square tube frame construction, 20 x 20 mm, made of stainless steel. Tube frame designed as a protective railing, top and bottom with removable stainless steel table tops. Load capacity: 20 kg,

Drawer dimensions: 445 x 95 mm
Abrasion-resistant, non-discolouring, corrosion-resistant synthetic antistatic castors (4 steering castors, dia. 75 mm, 2 of which have brakes with wall guard).

Equipment trolley

Dimensions: 675 x 475 x 650 mm
Weight: 9 kg

Order No. 542 281

Equipment trolley

Dimensions: 770 x 675 x 650 mm
Weight: 12 kg

Order No. 542 282

Equipment trolley with drawer

Dimensions: 675 x 475 x 650 mm
Weight: 14 kg

Order No. 542 283

Equipment trolley with drawer

Dimensions: 770 x 675 x 650 mm
Weight: 13 kg

Order No. 542 284

Equipment trolley with 3-sided stainless steel railing

Dimensions: 675 x 475 x 650 mm
Weight: 11 kg

Order No. 542 287

Equipment trolley with 3-sided stainless steel railing

Dimensions: 770 x 675 x 650 mm
Weight: 16 kg

Order No. 542 288

Equipment trolley with drawer and 3-sided stainless steel railing

Dimensions: 675 x 475 x 650 mm
Weight: 17 kg

Order No. 542 285

Equipment trolley with drawer and 3-sided stainless steel railing

Dimensions: 770 x 675 x 650 mm
Weight: 20 kg

Order No. 542 286

INSTRUMENT AND EQUIPMENT TROLLEYS, ACCESSORIES



Syringe and cannula dispenser

With 3 Plexiglas chutes as syringe dispensers and 5 Plexiglas chutes as cannula dispensers; with bracket (First In–First Out system).

Dimensions: 600 x 200 x 410 mm
(without bracket)

Order No. 542 290



Instrument disposal tray

Made of polypropylene, with slotted lid, can be sterilised, with swivel holder and fixing clamp.

Dimensions: 300 x 230 x 130 mm

Order No. 530 040



Disposal box set

Consisting of 10 boxes with 1 holder and fixing clamp.

Dimensions: ø 140 x 145 mm

Order No. 542 839

Accessories:

Reserve disposal boxes

(packing unit: 100 pc.)

Order No. 530 047

INSTRUMENT AND EQUIPMENT TROLLEYS, **ACCESSORIES**



Quiver

Divided into three parts for suction catheters, can be suspended.

Dimensions: 160 x 92 x 563 mm

Order No. 530 049



Power strip

Divided into six parts, with indicator light, connection cable 2.2 m, stainless steel mounting rail.

Dimensions: 390 x 50 x 45 mm

Order No. 530 050

German standard (other standards on request!)



Push handle

Ergonomic stainless steel handle, available for all trolley sizes.

Dimensions: depends on the size of the trolley

Order No. 287 691

MANOEUVRABLE IN THE OT AND OUTPATIENT DEPARTMENT



Transport and multi-purpose units must meet the highest standards when it comes to hygiene, economy, durability and ease of care. Therefore, all FF-MED brand units are made of stainless steel. This is due to the fact that stainless steel is even resistant to the most aggressive disinfectants, meaning that thorough cleaning is not an issue.

Does not apply to the use of concentrated chloric acid (HClO₃).

The jointless welding prevents residual dirt and germs from accumulating. All of the units have electrically-conductive special castors and are thus suitable for use anywhere.

Their design is just as convincing. Because of the neutral colour of stainless steel, the FF-MED transport and multi-purpose units match any furniture.



MANOEUVRABLE IN THE OT AND OUTPATIENT DEPARTMENT



All-purpose trolley

The trolleys are suitable for universal use and particularly for transporting consumer goods up to 20 kg. With practical push handle.

Tube frame as a protective railing, top and bottom with removable stainless steel table tops. All trolleys are equipped with rugged wall guards. Four steering castors with tapered ball bearing, dia. 125 mm, 2 of which have brakes, electrically conductive, with thread guard.

With 2 levels

Dimensions: 833 x 705 x 800 mm

Weight: 14 kg

Order No. 542 291

With 2 levels

Dimensions: 1053 x 705 x 800 mm

Weight: 16 kg

Order No. 542 292

With 3 levels

Dimensions: 1053 x 705 x 1020 mm

Weight: 23 kg

Order No. 542 293

Should you have any special request (handles, number of the trays, fixed tray, custom size, etc.), please consult your local authorized Partner.

TRANSPORT AND MULTI-PURPOSE TROLLEYS



Transport trolley

The transport trolley is the even more rugged answer to the all-purpose trolley.

Frame: sturdy, jointless round tube, 25 mm dia., made of stainless steel, fixed and welded shelves without joints and with an all round 10 mm raised profile edge, reinforced with 2 profiles on the underside.

All trolleys are equipped with rugged wall guards. Castors: Four steering castors with tapered ball bearing, dia. 125 mm, 2 of which have brakes, electrically conductive, with thread guard. Max. loading capacity: 80 kg per shelf, 120 kg total.

Transport trolley MSW 8 x 5-2 with 2 shelves, 800 x 500 mm

Clearance distance between shelves:
585 mm

Dimensions: 900 x 600 x 950 mm

Weight: 17 kg

Order No. 531 077

Transport trolley MSW 8 x 5-3 with 3 shelves, 800 x 500 mm

Clearance distance between shelves:
275 mm

Dimensions: 900 x 600 x 950 mm

Weight: 20 kg

Order No. 531 078

Transport trolley MSW 9 x 6-2 with 2 shelves, 900 x 550 mm

Clearance distance between shelves:
585 mm

Dimensions: 1000 x 650 x 950 mm

Weight: 18 kg

Order No. 531 081

Transport trolley MSW 9 x 6-3 with 3 shelves, 900 x 550 mm

Clearance distance between shelves:
275 mm

Dimensions: 1000 x 650 x 950 mm

Weight: 22 kg

Order No. 531 082

Transport trolley MSW 10 x 6-2 with 2 shelves, 1000 x 600 mm

Clearance distance between shelves:
585 mm

Dimensions: 1100 x 700 x 1000 mm

Weight: 23 kg

Order No. 531 085

Transport trolley MSW 10 x 6-3 with 3 shelves, 1000 x 600 mm

Clearance distance between shelves:
275 mm

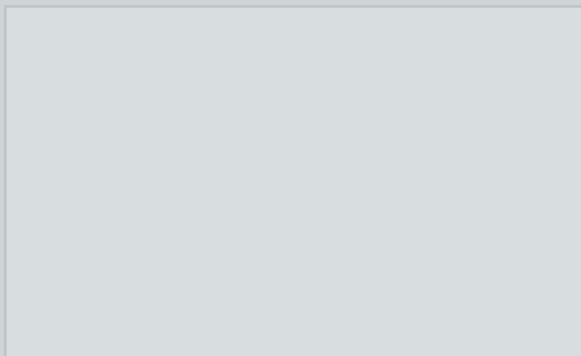
Dimensions: 1100 x 700 x 1000 mm

Weight: 28 kg

Order No. 531 087



Authorized Partner:



The FF Co. Ltd.
Member of the Rev Group



FF Fémfeldolgozó Co. Ltd. is a medium-sized, family-owned company in Hungary, and since 2005 it is the member of the Rev Group (www.revgroup.hu).

For decades we have been specialists in the processing of stainless steel and electrolytically galvanized steel. With our modern machine park, electropolishing facility and powder coating capabilities the main focus of our production program are products for professional commercial kitchens, complete systems for shop-baking equipment, accessories for sterilization equipment and our own "medical line" with furniture for clinics, ambulances and medical practices of the highest quality.

With highly qualified technical staff we are constantly working to improve our products and to implement individual customer requests.

Our head office is located in Budapest, the production site in Mezőtúr.

The product range consists of cabinet systems, functional trolleys, sterile services equipment and mobile furnishings for the operating room.

All of FF Co. Ltd. Professional's divisions have DIN EN ISO 9001:2015, 14001:2015 certification, guaranteeing a high standard of reliability and customer orientation.

Our daughter company in Germany:
MED-Systeme GmbH

<http://www.med-systeme.de>

MED-Systeme GmbH

planung - vertrieb

einrichtungen für
klinik.labor.praxis
möbel & objekte

All other countries:
FF Co. Ltd. Hungary

<http://ffzrt.hu>



FF FÉMFELDOLGOZÓ
SINCE 1949